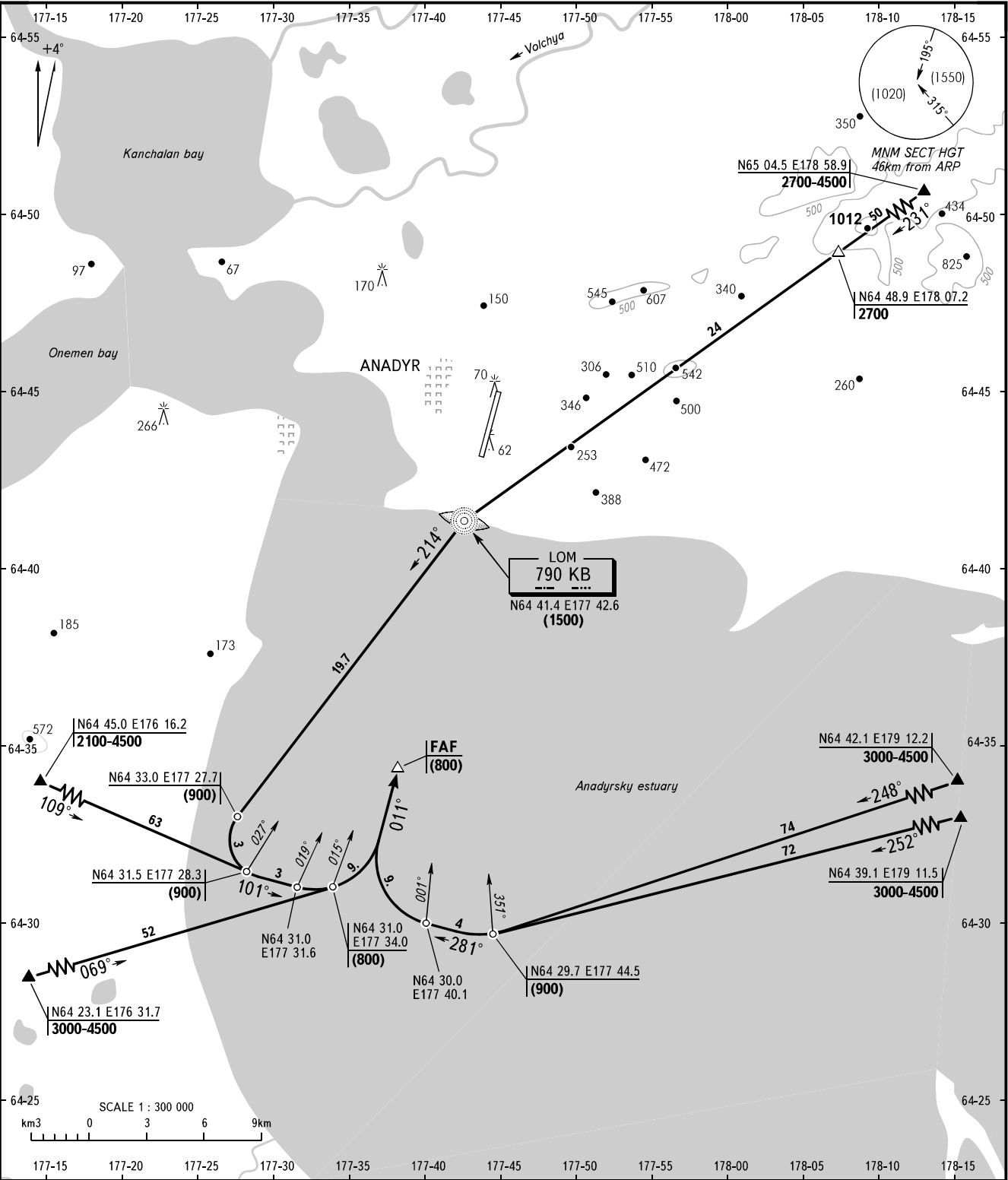


STANDARD ARRIVAL CHART  
INSTRUMENT (STAR) - ICAO

TRANSITION  
LEVEL : 2100

ANADYR, RUSSIA  
UGOLNY  
RWY 01



APPROACH TOWER 124.0

BEARINGS AND TRACKS ARE MAGNETIC  
ALTITUDES, HEIGHTS AND ELEVATIONS ARE IN METRES  
DISTANCES ARE IN KILOMETRES

WARNING:  
1. Heavy turbulence with down-flows may be expected on final.  
2. When radar control is not provided, cross LOM(LMM) at 3000, descending turn left and execute rectangular traffic pattern approach.